

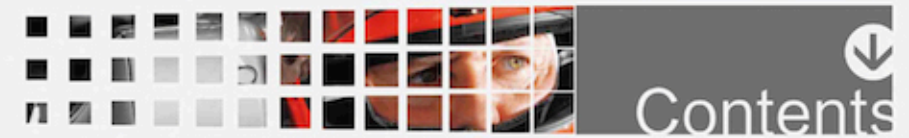
EXPERT OF LED LIGHTING MANUFACTURE

Catalog

LED AUTO & ENGINEER MACHINERY LIGHT

2015





01 LED LIGHT BAR

15 LED WORK LIGHT

31 LED DRIVING LIGHT

39 HID WORK LIGHT

42 HID DRIVING LIGHT

45 LED/HID SEARCH LIGHT

47 PRODUCTS ACCESSORIES



Enhanced PMMA Lens
Add the reinforced carbon fiber, hard texture.
The adiabatic insulation, translucent.
Have a good impact strength.



High Brightness Spotlight
Adopt international famous LED chips, high
lumen efficiency and stability, long lifespan.



Toughened Glass Lens
95% lighting transmission, high refractive index.
Strong striking, stable color features.



Exquisite Waterproof Design
Has passed IP67 waterproof testing.
Can protect lamp inner parts and work stably.



Smart IC Control Circuit
Enhanced low-power switch, dedicated chip.
Fast input, energy efficiency, stable operation.



Professional LED Technology
Use superior LED creative reflector technology,
more brighter, longer lifespan, energy saving.



Hard & Rustless Lamp Housing
Use Anodize or toughened glass, aluminum
alloy housing and stainless bracket, vibration
resistance, rustless.



High Class Aluminum Alloy
Adopt pure aluminum alloy material, high
hardness, good heat dissipation.



LED LIGHT BAR



Scope of application:

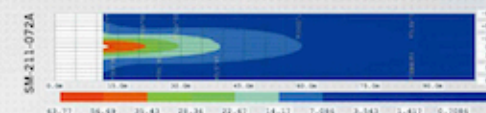
Ordinary vehicles: truck, buses, off-road vehicles, agricultural machinery, vehicle, ship, excavator, bulldozer, engineering vehicle, feller, rollers, loaders, mining vehicle, crane, forklift etc..

Special vehicle: beach car, fire truck, rescue vehicles, police cars, communication vehicle, military command vehicles, tanks, armored vehicles and other.

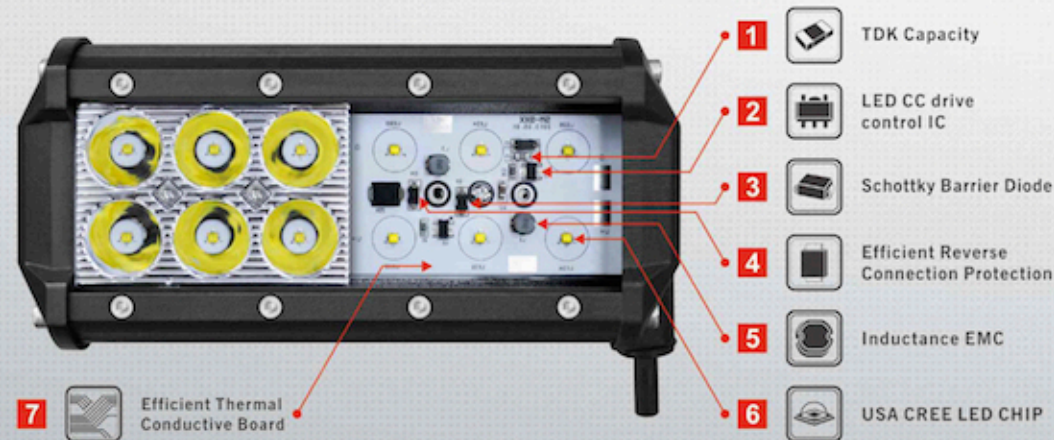
Business areas: industrial plant, public buildings, hotels, garden square.



LED Light Bar-SM-21X (3W/PC)
SM-21X



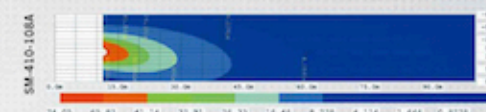
The LED circuit diagram
SM-21X



Dual Row LED Light Bar-SM-21X

MODEL	LENGTH INCH	LENGTH MM	LED'S	POWER	VOLTAGE	IP RATING	LUMENS	PACKAGING
SM-21X-018A	3.8"	99x73x107	6	18W	12-30V	IP67	1260LM	18PCS/CTN
SM-21X-036A	6.5"	167x73x107	12	36W			2520LM	12PCS/CTN
SM-21X-054A	9.2"	235x73x107	18	54W			3780LM	12PCS/CTN
SM-21X-072A	12.0"	305x73x107	24	72W			5040LM	12PCS/CTN
SM-21X-090A	14.50"	370x73x107	30	90W			6250LM	6PCS/CTN
SM-21X-108A	17.2"	438x73x107	36	108W			7560LM	6PCS/CTN
SM-21X-126A	19.8"	505x73x107	42	126W			8820LM	6PCS/CTN
SM-21X-234A	35.9"	914x73x107	78	234W			16200LM	6PCS/CTN

LED Light Bar-SM-41X (3W/PC)
SM-41X



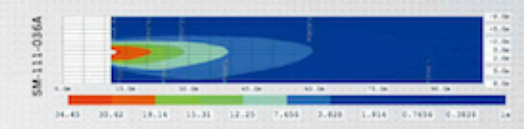
The LED circuit diagram
SM-41X



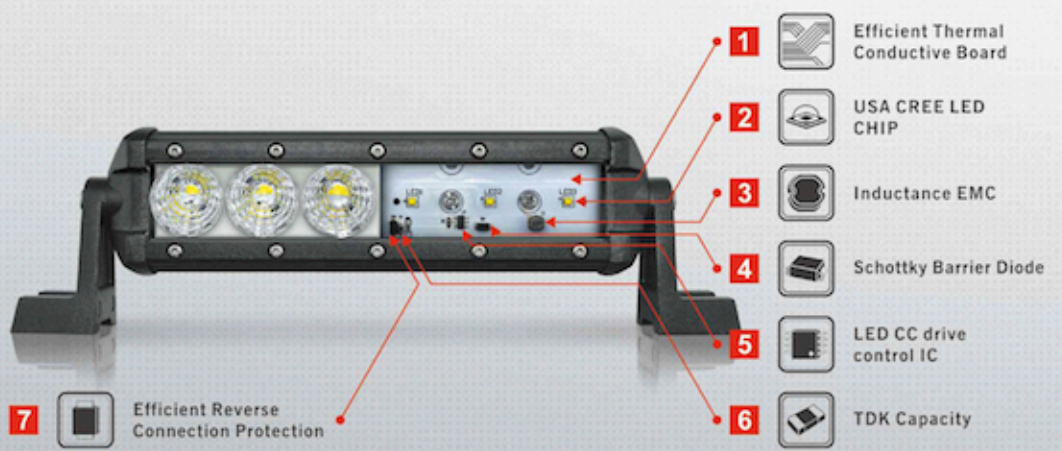
Quad Row LED Light Bar-SM-41X

MODEL	LENGTH INCH	LENGTH MM	LED'S	POWER	VOLTAGE	IP RATING	LUMENS	PACKAGING
SM-41X-036A	3.8"	99x73x107	12	36W	12-30V	IP67	2520LM	12PCS/CTN
SM-41X-072A	6.5"	167x73x107	24	72W			5040LM	8PCS/CTN
SM-41X-108A	9.3"	235x73x107	36	108W			6150LM	8PCS/CTN
SM-41X-144A	12.0"	305x73x107	48	144W			10080LM	6PCS/CTN
SM-41X-180A	14.5"	368x73x107	60	180W			13000LM	6PCS/CTN
SM-41X-216A	17.3"	440x73x107	72	216W			15500LM	6PCS/CTN

LED Light Bar-SM-11X (3W/PC)
SM-11X



The LED circuit diagram
SM-11X



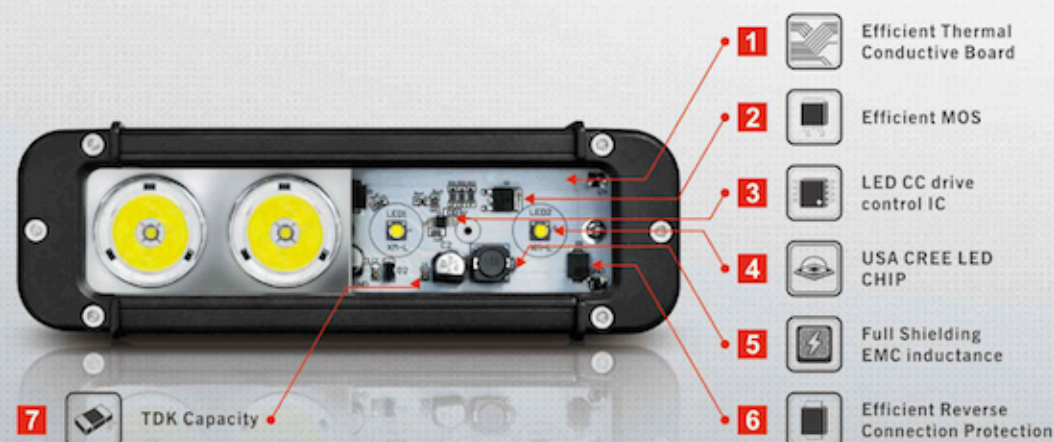
Single Row LED Light Bar-SM-11X

MODEL	LENGTH INCH	LENGTH MM	LED'S	POWER	VOLTAGE	IP RATING	LUMENS	PACKAGING
SM-11X-018A	7.5"	192x44x74	6	18W	12-30V	IP67	1008LM	18PCS/CTN
SM-11X-027A	10.8"	273x44x74	9	27W			1215LM	18PCS/CTN
SM-11X-036A	13.9"	357x44x74	12	36W			2016LM	18PCS/CTN
SM-11X-045A	17.0"	435x44x74	15	45W			2520LM	12PCS/CTN
SM-11X-054A	20.3"	516x44x74	18	54W			3024LM	12PCS/CTN
SM-11X-063A	23.5"	597x44x74	21	63W			3528LM	12PCS/CTN
SM-11X-108A	39.4"	1002x44x74	36	108W			6048LM	9PCS/CTN
SM-11X-117A	42.6"	1083x44x374	39	117W			6552LM	9PCS/CTN

LED Light Bar-SM-12X (5W/PC)
SM-12X



The LED circuit diagram
SM-12X



Single Row LED Light Bar-SM-12X

MODEL	LENGTH INCH	LENGTH MM	LED'S	POWER	VOLTAGE	IP RATING	LUMENS	PACKAGING
SM-12X-015A	4.4"	111x85x50	3	15W	12-48V	IP67	1050LM	27PCS/CTN
SM-12X-030A	7.6"	192x85x50	6	30W			2100LM	18PCS/CTN
SM-12X-045A	10.8"	273x85x50	9	45W			3150LM	18PCS/CTN
SM-12X-060A	14.0"	354x85x50	12	60W			4200LM	18PCS/CTN
SM-12X-075A	17.1"	435x85x50	15	75W			5250LM	12PCS/CTN
SM-12X-090A	20.3"	516x85x50	18	90W			6300LM	12PCS/CTN
SM-12X-105A	23.5"	597x85x50	21	105W			7350LM	12PCS/CTN
SM-12X-180A	39.5"	1002x85x50	36	180W			12600LM	9PCS/CTN
SM-12X-195A	42.6"	1083x85x50	39	195W			13650LM	9PCS/CTN

LED Light Bar-SM-13X-B

(10W/PC)

SM-13X-B



LED Light Bar-SM-13X-B

SM-13X



Product Description

1. Built-in lamp cup, back housing and front cover, constructing of this lamp, which is easy to install and disassemble.
2. Compact and stylish black powder coated aluminum die cast housing comes with good heat dissipation, IP67 rating, good water-resistant and shock-resistant function.
3. Unbreakable scratch-resistant Import polycarbonate lens, which largely increase light efficiency.
4. Be equipped with high intensity 10W/pcs USA CREE XML chip.
5. Available in spot, flood, combo patterns.
6. Easy mounting bracket structure.



Single Row LED Light Bar-SM-13X-B

MODEL	LENGTH INCH	LENGTH MM	LED'S	POWER	VOLTAGE	IP RATING	LUMENS	PACKAGING
SM-13X-030B	6"	150x79x116	3	30W	12-48V	IP67	2250LM	12PCS/CTN
SM-13X-060B	12"	300x79x116	6	60W			4500LM	8PCS/CTN
SM-13X-090B	18"	450x79x116	9	90W			6750LM	6PCS/CTN
SM-13X-120B	24"	600x79x116	12	120W			9000LM	4PCS/CTN
SM-13X-150B	30"	760x79x116	15	150W			11250LM	3PCS/CTN
SM-13X-180B	36"	1066x79x116	18	180W			13500LM	3PCS/CTN

LED Light Bar-SM-13X (10W/PC)
SM-13X

PRODUCT FEATURES
Product Description

1. Built-in lamp cup, back housing and front cover, constructing of this lamp, which is easy to install and disassemble.
2. Compact and stylish black powder coated aluminum die cast housing comes with good heat dissipation, IP67 rating, good water-resistant and shock-resistant function.
3. Unbreakable scratch-resistant import polycarbonate lens, which largely increase light efficiency.
4. Be equipped with high intensity 10W/pcs USA CREE XML chip.
5. Available in spot, flood, combo patterns.
6. Easy mounting bracket structure.


Single Row LED Light Bar-SM-13X

MODEL	LENGTH INCH	LENGTH MM	LED'S	POWER	VOLTAGE	IP RATING	LUMENS	PACKAGING
SM-13X-020M	4.7"	119x64x92	2	20W	12-48V	IP67	1450LM	20PCS/CTN
SM-13X-040M	7.8"	200x64x92	4	40W			2900LM	20PCS/CTN
SM-13X-060M	11.0"	281x64x92	6	60W			4350LM	10PCS/CTN
SM-13X-100M	17.4"	443x64x92	10	100W			7500LM	6PCS/CTN
SM-13X-120M	20.6"	524x64x92	12	120W			8650LM	6PCS/CTN
SM-13X-180M	30.0"	767x64x92	18	180W			13000LM	6PCS/CTN
SM-13X-240M	39.7"	1010x64x92	24	240W			17200LM	4PCS/CTN
SM-13X-260M	43.0"	1091x64x92	26	260W			18500LM	4PCS/CTN

LED Light Bar-SM-23X (10W/PC)
SM-23X

PRODUCT FEATURES
Product Description

1. Built-in lamp cup, back housing and front cover, constructing of this lamp, which is easy to install and disassemble.
2. Compact and stylish black powder coated aluminum die cast housing comes with good heat dissipation, IP67 rating, good water-resistant and shock-resistant function.
3. Unbreakable scratch-resistant import polycarbonate lens, which largely increase light efficiency.
4. Be equipped with high intensity 10W/pcs USA CREE XML chip.
5. Available in spot, flood, combo patterns.
6. Easy mounting bracket structure.


Single Row LED Light Bar-SM-23X

MODEL	LENGTH MM	LED'S	POWER	VOLTAGE	IP RATING	LUMENS	PACKAGING
SM-23X-040M	200	4	40W	12-48V	IP67	2800LM	12PCS/CTN
SM-23X-080M	400	8	80W			5600LM	6PCS/CTN
SM-23X-120M	524	12	120W			8400LM	6PCS/CTN
SM-23X-200M	886	20	200W			14000LM	4PCS/CTN
SM-23X-240M	1010	24	240W			16800LM	4PCS/CTN

LED Light Bar-SM-13X-C (10W/PC)
SM-13X-C

PRODUCT FEATURES

- Product Description
1. Built-in lamp cup, back housing and front cover, constructing of this lamp, which is easy to install and disassemble.
 2. Compact and stylish black powder coated aluminum die cast housing comes with good heat dissipation, IP67 rating, good water-resistant and shock-resistant function.
 3. Unbreakable scratch-resistant import polycarbonate lens, which largely increase light efficiency.
 4. Be equipped with high intensity 10W/pcs USA CREE XML chip.
 5. Available in spot, flood, combo patterns.
 6. Easy mounting bracket structure.



Single Row LED Light Bar-SM-13X-C

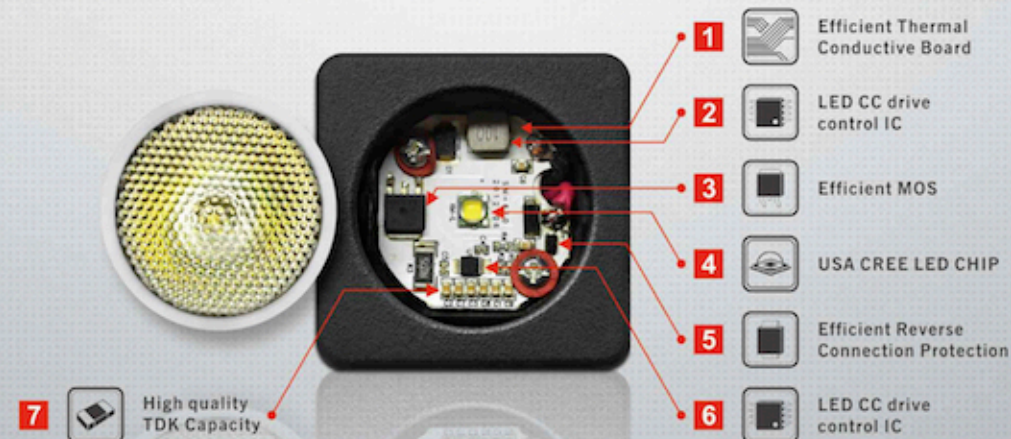
MODEL	LENGTH INCH	LENGTH MM	LED'S	POWER	VOLTAGE	IP RATING	LUMENS	PACKAGING
SM-13X-020C	4.7"	119x64x92	2	20W	12-48V	IP67	1450LM	20PCS/CTN
SM-13X-040C	7.8"	200x64x92	4	40W			2900LM	10PCS/CTN
SM-13X-060C	11.0"	281x64x92	6	60W			4350LM	10PCS/CTN
SM-13X-100C	17.4"	443x64x92	10	100W			7500LM	6PCS/CTN
SM-13X-120C	20.6"	524x64x92	12	120W			8650LM	6PCS/CTN
SM-13X-180C	30.0"	767x64x92	18	180W			13000LM	6PCS/CTN
SM-13X-240C	39.7"	1010x64x92	24	240W			17200LM	4PCS/CTN
SM-13X-260C	43.0"	1091x64x92	26	260W			18500LM	4PCS/CTN

LED WORKLIGHT



The LED circuit diagram

SM-2010-SXA



NEW

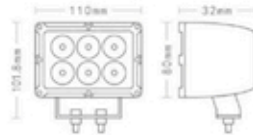
SM-5030-SXA1 30W

- SM-5030-SXA1 5"
- Product Name: Led Work Light
 - Led Power: 30W(6pcs*5w Cree led)
 - Operating Volt: 12-48V DC
 - Size: 110*80*101.8 mm
 - Long life: 50000h
 - Color temperature: 4300K/5500K/6300K
 - Theoretical lumens output: 2150 lm
 - Beam: spot beam
 - Material: ADC 12 die cast aluminum housing,high-strength PC cover PMMA lens,stainless steel bracket
 - Waterproof rate: Ip67
 - Two mounting methods,embedded installation or bracket CE & RoHS approved
 - Packaging: 20pcs/ctn



PRODUCTS

SIZE



NEW

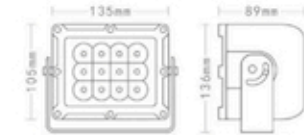
SM-7060-SXA 60W

- PATENT SM-7060-SXA 7"
- Product Name: Led Work Light
 - Led Power: 60W (12pcs*5w CREE LED XTE)
 - Operating Volt: 12-48V DC
 - Size: 135*89*136 mm
 - Long life: 50000h
 - Color temperature: 4300K/5500K/6300K
 - Theoretical lumens output: 3600 lm
 - Beam: flood beam & spot beam
 - Material: Die cast aluminum housing,PC lens,stainless steel bracket
 - Waterproof rate: Ip67
 - CE & RoHS approved
 - Packaging: 6pcs/ctn



PRODUCTS

SIZE



NEW

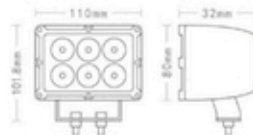
SM-5030-SXA2 30W

- SM-5030-SXA2 5"
- Product Name: Led Work Light
 - Led Power: 30W(6pcs*5w Cree led)
 - Operating Volt: 12-48V DC
 - Size: 110*80*101.8 mm
 - Long life: 50000h
 - Color temperature: 4300K/5500K/6300K
 - Theoretical lumens output: 2150 lm
 - Beam: spot beam
 - Material: ADC 12 die cast aluminum housing,high-strength PC cover PMMA lens,stainless steel bracket
 - Waterproof rate: Ip67
 - Two mounting methods,embedded installation or bracket CE & RoHS approved
 - Packaging: 20pcs/ctn



PRODUCTS

SIZE



NEW

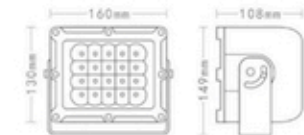
SM-8100-SXA 100W

- PATENT SM-8100-SXA 8"
- Product Name: Led Work Light
 - Led Power: 100W (20pcs*5w CREE LED XTE)
 - Operating Volt: 12-48V DC
 - Size: 160*130*108 mm
 - Long life: 50000h
 - Color temperature: 4300K/5500K/6300K
 - Theoretical lumens output: 6500 lm
 - Beam: flood beam & spot beam
 - Material: Die cast aluminum housing,PC lens,stainless steel bracket
 - Waterproof rate: Ip67
 - CE & RoHS approved
 - Packaging: 6pcs/ctn



PRODUCTS

SIZE



SM-4015-SXA **NEW**
15W

SM-4020-SXA **NEW**
20W


PRODUCTS



SIZE



PRODUCT FEATURES

1. Adopt USA CREE led, high lumen output, low power consumption.
2. IP67, the high performance of tight waterproof, dustproof, quakeproof.
3. The suitable design for heating elimination.
4. The valid irradiation distance is much more longer than normal bulb.
5. High brightness and mounting flexible to truck and heavy duty vehicles.
6. Light perception: a softer light to prevent glare.



PRODUCT PARAMETERS

MODEL	WATTS	INPUT VOLT DC	NOMINAL CURRENT	LED CHIP	THEORETICAL LUMENS OUTPUT	OPERATING LUMENS OUTPUT	COLOUR TEMPERATURE	LENS	BODY	IP RATING	WEIGHT	MOUNTING BRACKET	BEAM	PACKAGING
SM-4015-SXA	15W	12-48V	1.25A	CREE	1500LM	1080LM	6500K	PC	Aluminum	IP67	0.65KG	Stainless steel	Flood Spot	27PCS/CTN
SM-4020-SXA	20W		1.66A		2000LM	1440LM								

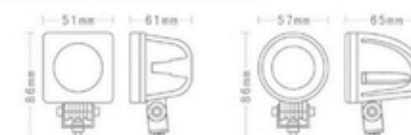

SM-2010-SXA **HOT**
10W

SM-2010-RXA **HOT**
10W


PRODUCTS



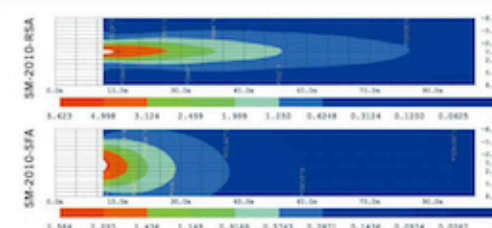
SIZE



PRODUCT FEATURES

1. Each light module is equipped with latest Single 10 Watt Cree XML LED Chip(750Lm each) and can endure the roughest work and most demanding driving conditions.
2. Small size can assemble with a wide range of applications
3. The housing use high-purity aluminum alloy die casting, surface is processed by electrostatic spraying which has constant temperature curing and strong adhesion.
4. Back housing and front cover can be separate, which is easy to install and dismantle.
5. Die casting aluminum body has good waterproof, dustproof and shockproof function.
6. Optional housing color: Black, White and Chrome.
7. CE & RoHS approved.

LIGHT PATTERN MAP



PRODUCT PARAMETERS

MODEL	WATTS	INPUT VOLT DC	NOMINAL CURRENT	LED CHIP	THEORETICAL LUMENS OUTPUT	OPERATING LUMENS OUTPUT	COLOUR TEMPERATURE	LENS	BODY	IP RATING	WEIGHT	MOUNTING BRACKET	BEAM	PACKAGING
SM-2010-SXA	10W	12-48V	0.83A	CREE XML	1000LM	750LM	6500K	PC	Aluminum	IP68	0.4KG	Stainless steel	Flood Spot	20PCS/CTN
SM-2010-RXA														



SM-6018-RXA **HOT**
18W

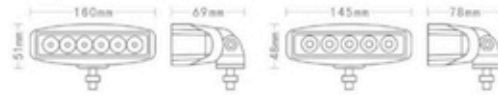


SM-6015-RXA **HOT**
15W



PRODUCTS

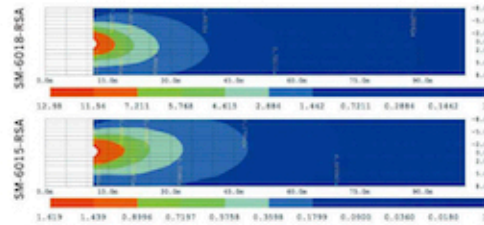
SIZE



PRODUCT FEATURES

LIGHT PATTERN MAP

- Using ADS12 die-casting aluminum housing, high-strength PMMA cover, PC cup (vacuum aluminum plating), 304 stainless steel bracket.
- The luminaire's small size and low power have made it an ideal selection for many exterior locations.
- Die casting high-purity aluminum alloy and electrostatic sprayed surface can keep constant temperature and strong adhesion force.
- It has good waterproof, dustproof level.
- It adopts Taiwan Epistar LED chip.
- Optional housing color: Black, White.
- CE & RoHS approved.



PRODUCT PARAMETERS

MODEL	WATTS	INPUT VOLT DC	NOMINAL CURRENT	LED CHIP	THEORETICAL LUMENS OUTPUT	OPERATING LUMENS OUTPUT	COLOUR TEMPERATURE	LENS	BODY	IP RATING	WEIGHT	MOUNTING BRACKET	BEAM	PACKAGING
SM-6018-RXA	18W	12-30V	1.5A	Cree Epistar	1260LM	875LM	6500K	PMMA	Aluminum	IP67	0.8KG	Stainless steel	Flood Spot	20PCS/CTN
SM-6015-RXA	15W		1.25A		1080LM	750LM								



HOT

SM-3009-RXA 9W



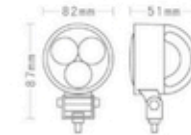
- LED Power: 9W
- LEDs: 3pcs* 3W Epistar LED
- Light output about 710lm
- Operating Volt: 12-30Volt DC
- Beam: Spot beam, Flood beam
- Material: Diecast aluminum housing, stainless steel bracket
- LENS: PC
- Waterproof rate: IP67
- CE approved

MODEL	LENGTH	WATTS	LUMENS	BEAM	PACKAGING
SM-3009-RXA	82*82*51mm 3"	9W	710LM	SPOT FLOOD	20PAIRS/CTN



PRODUCTS

SIZE



HOT

SM-3012-RXA 12W



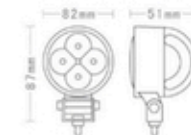
- LED Power: 12W
- LEDs: 4pcs*3W Epistar LED
- Light output about 840lm
- Operating Volt: 12-30Volt DC
- Beam: Spot beam, Flood beam
- Material: Diecast aluminum housing, stainless steel bracket
- LENS: PC
- Waterproof rate: IP67
- CE & RoHS approved.

MODEL	LENGTH	WATTS	LUMENS	BEAM	PACKAGING
SM-3012-RXA	82*76*109mm 3"	12W	710LM	SPOT FLOOD	20PCS/CTN



PRODUCTS

SIZE

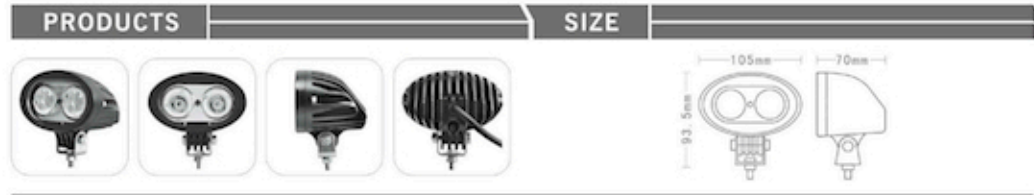




NEW

SM-4010/4020 10W/20W

- LED Power: 10W/20W
- LEDs: 2pcs* 5W CREE LED/2pcs* 10W CREE LED
- Operating Volt: 12-30Volt DC
- Beam: Spot beam
- Material: Diecast aluminum housing, stainless steel bracket
- Color: 10W Blue Light, 20W White Light
- LENS: PC
- Waterproof rate: Ip67
- Packaging: 27pcs/ctn



HOT

SM-4018-RXA 18W

- LED Power: 18W
- LEDs: 6pcs* 3W CREE LED
- Light output about 520lm
- Operating Volt: 12-30Volt DC
- Beam: Driving beam
- Material: Diecast aluminum housing
- LENS: PC
- Waterproof rate: Ip67
- Packaging: 20pcs/ctn



HOT

SM-6012-RXA 12W

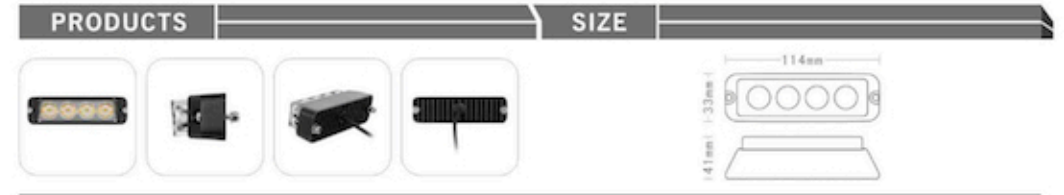
- LED Power: 12W
- LEDs: 4pcs* 3W CREE LED
- Light output about 650lm
- Operating Volt: 12-30Volt DC
- Beam: Flood beam
- LENS: PC
- Waterproof rate: Ip67
- Material: Diecast aluminum housing stainless steel bracket
- Packaging: 20pcs/ctn



NEW

SM-SL004 4W

- LED Power: 4W
- LEDs: 4pcs* 1W leds
- Light output about 40lm
- Operating Volt: 12-24Volt DC
- Beam: Flash beam
- LENS: PC
- Waterproof rate: Ip67
- Material: Diecast aluminum housing
- Packaging: Two pcs/box, 80pcs/CTN



NEW

SM-SL012 12W

- FLASH SIGNAL LIGHT
- LED Power: 12W
- LEDs: 4pcs* 3W CREE LED
- Light output about 900lm
- Operating Volt: 12-30Volt DC
- Beam: Spot beam
- Material: Diecast aluminum housing
- Waterproof rate: Ip67
- Packaging: Two pcs/box, 48pcs/CTN



NEW

SM-801 0.15W

- LED Power: 0.15W
- LEDs: 1pcs* 0.15W CREE LED
- Operating Volt: 12-30Volt DC
- Beam: Flood beam
- Material: Metal Cover, PC Lens
- Waterproof rate: Ip67
- Packaging: 10pcs/box, 40boxes/ctn



SM-6024-SXA **HOT**
24WSM-7033-SXA **HOT**
33WSM-7045-SXA **HOT**
45W

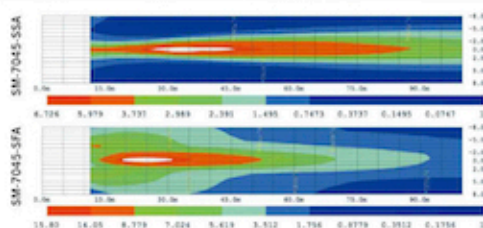
PRODUCTS



PRODUCT FEATURES

1. Die-cast aluminum alloy housing ensures high durability with low maintenance.
2. The high performance of tight waterproof, dustproof, quakeproof.
3. The valid irradiation distance is much more longer than normal bulb.
4. Light Transmission is much more stronger than Normal Halogen Bulb.
5. The performance for heat elimination is much better than Normal Halogen Bulb.

LIGHT PATTERN MAP



PRODUCTS PARAMETERS

MODEL	WATTS	INPUT VOLT DC	NOMINAL CURRENT	LED CHIP	THEORETICAL LUMENS OUTPUT	OPERATING LUMENS OUTPUT	COLOUR TEMPERATURE	LENS	BODY	IP RATING	WEIGHT	MOUNTING BRACKET	BEAM	PACKAGING
SM-6024-SXA	24W		12V 2A		1750LM	1205LM					0.7kg			20PCS/CTN
SM-7033-SXA	33W	12-30V	12V 2.75A	Epistar	2640LM	2100LM	6500K	Tempered glass	Aluminum	IP67	1.3kg	Stainless steel	Flood Spot	12PCS/CTN
SM-7045-SXA	45W		12V 3.75A		3280LM	2300LM					1.4kg			12PCS/CTN

SM-4015-RXA **HOT**
15WSM-4020-RXA **HOT**
20WSM-4025-RXA **HOT**
25W

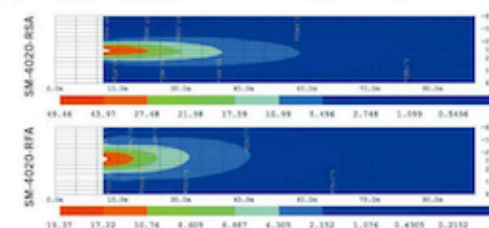
PRODUCTS



PRODUCT FEATURES

1. Wide operating voltage range: It can apply to different types of trucks, cars, and other vehicles.
2. The appearance of fine craft and easy to install brackets.
3. Different sizes to install in different locations.
4. Light perception: A softer light to prevent glare.
5. Long life: longer than ordinary advanced LED light bulbs, more than 50000 hours life.
6. Compact aluminum casing, good shock-proof & waterproof function.
7. CE approved.

LIGHT PATTERN MAP



PRODUCTS PARAMETERS

MODEL	WATTS	INPUT VOLT DC	NOMINAL CURRENT	LED CHIP	THEORETICAL LUMENS OUTPUT	OPERATING LUMENS OUTPUT	COLOUR TEMPERATURE	LENS	BODY	IP RATING	WEIGHT	MOUNTING BRACKET	BEAM	PACKAGING
SM-4015-RXA	15W		12V 1.25A		1500LM	1080LM					0.65kg			
SM-4020-RXA	20W	12-30V	12V 1.66A	CREE	2000LM	1440LM	6500K	Tempered glass	Aluminum	IP67	0.85kg	Stainless steel	Flood	20PCS/CTN
SM-4025-RXA	25W		12V 2A		2500LM	1800LM					1.0kg			





PRODUCT DESCRIPTION



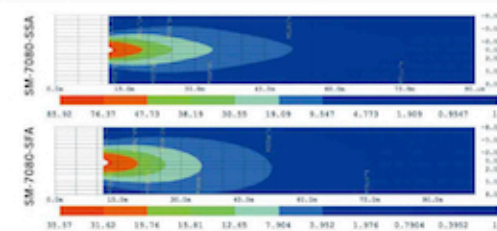
SM-TGD-A120 120W

- SM-TGD-A120
- Product Name: Led Work Light
- Led Power: 120W(48pcs LED)
- Operating Volt: AC100-240V
- Size: 322*284*68mm
- Long life: 50000h
- Color temperature: 3500K/5500K/6500K
- Theoretical lumens output: 7500 lm
- Body color: Black
- Material: Die cast aluminum housing, PC lens
- Waterproof rate: IP65
- Weight: 5.4kgs
- CE, RoHS approved



PRODUCT FEATURES **LIGHT PATTERN MAP**

1. High intensity LED chip, multivoltage usage & low power consumption.
2. The shell of the lights is made of high purity aluminum alloy, electrostatic coating, thermostatic hardening and excellent adhesion.
3. Sturdy adjustable stainless steel mounting bracket.
4. These lights have good waterproof, shockproof and dustproof function.
5. Application: Off road vehicles, SUV, 4X4 truck, heavy duty vehicles etc.
6. CE/ RoHs approved.



PRODUCTS PARAMETERS

MODEL	WATTS	INPUT VOLT DC	NOMINAL CURRENT	LED CHIP	THEORETICAL LUMENS OUTPUT	OPERATING LUMENS OUTPUT	COLOUR TEMPERATURE	LENS	BODY	IP RATING	WEIGHT	MOUNTING BRACKET	BEAM	PACKAGING
SM-5040-SXA	40W	12-48V	12V 3.3A	CREE XML	4000LM	2800LM	6500K	Tempered glass	Aluminum	IP67	1.4Kg	stainless steel	Flood Spot	12PCS/CTN
SM-5048-SXA	48W		12V 4A	CREE XBD	4800LM	3450LM								
SM-6027-SXA	27W	12-30V	12V 2.25A	Epistar	1950LM	1400LM		0.8Kg			20PCS/CTN			
SM-5040-RXA	40W		12V 3.3A		4000LM	2800LM		1.4Kg			12PCS/CTN			
SM-5050-SXA	50W		12V 4.2A	CREE XML	5000LM	3500LM		PC			1.7Kg			12PCS/CTN
SM-7080-SXA	80W	12-48V	12V 6.7A		6720LM	5400LM					2.3Kg			8PCS/CTN



SM-5018-RXA **HOT**
18W



SM-6015-SXA **HOT**
15W



SM-5024-SXA **HOT**
24W



PRODUCTS



The LED circuit diagram
SM-4024-RXA



- 1** Taiwan Epistar LED chip
- 2** Full Shielding EMC inductance
- 3** Efficient MOS
- 4** LED CC drive control IC
- 5** TDK Capacity
- 6** Shielding SMD bead
- 7** Efficient Reverse Connection Protection
- 8** Efficient Thermal Conductive Board

SM-4024-RXA **HOT**
24W



SM-4027-RXA **HOT**
27W



SM-5027-SXA **HOT**
27W



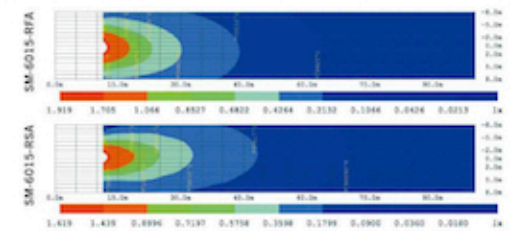
PRODUCTS



PRODUCT FEATURES

1. High purity diecast aluminum body, better shockproof waterproof function, thus it can work in the rain or other harsh environments.
2. Environmental Protection And Durability, safer and energy-saving.
3. Long life: longer than ordinary advanced LED light bulbs, more than 30000 hours life.
4. Perfect for pickups, trucks, SUVs, construction vehicles etc. for a nice off road look and better visibility.
5. CE & RoHs approved.

LIGHT PATTERN MAP



PRODUCTS PARAMETERS

MODEL	WATTS	INPUT VOLT DC	NOMINAL CURRENT	LED CHIP	THEORETICAL LUMENS OUTPUT	OPERATING LUMENS OUTPUT	COLOUR TEMPERATURE	LENS	BODY	IP RATING	WEIGHT	MOUNTING BRACKET	BEAM	PACKAGING
SM-5018-RXA	18W	12-30V	12V 1.5A	Epistar CREE	1300LM	920LM	6500K	PMMA	Aluminium	IP67	0.7Kg	stainless steel	Flood Spot	12PCS/CTN
SM-6015-SXA	15W		12V 1.25A		1080LM	750LM								
SM-5024-SXA	24W		12V 2A	Epistar CREE	1750LM	1250LM		0.7Kg			12PCS/CTN			
SM-4024-RXA	24W		12V 2A		1950LM	1400LM		0.8Kg			8PCS/CTN			



SM-6027-RXA **HOT**
27W



SM-7036-RXA **HOT**
36W



SM-6024-RXA **HOT**
24W



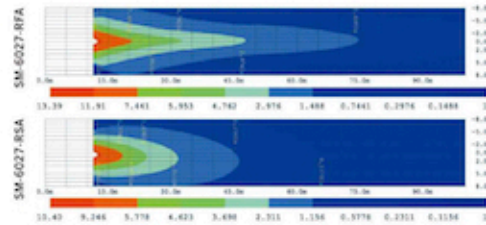
PRODUCTS



PRODUCT FEATURES

1. Built-in high efficiency glass reflector lamp, the brightness increases 15% or more.
2. Using high intensity 3W/pcs LED chip, low power consumption, high luminous flux.
3. Using purity aluminum alloy die casting, processed by electrostatic spraying, better constant temperature curing and stronger adhesion.
4. Good waterproof, shockproof and dustproof function.
5. Material: Compact aluminum die cast housing, PC Lens, stainless steel bracket.
6. Application: car, tractors, suv, excavator, Agricultural machinery lamps, Beach lights, Ship indicator, Cruise lamp, large trucks lamps
7. CE & RoHS approved.

LIGHT PATTERN MAP



PROUUCTS PARAMETERS

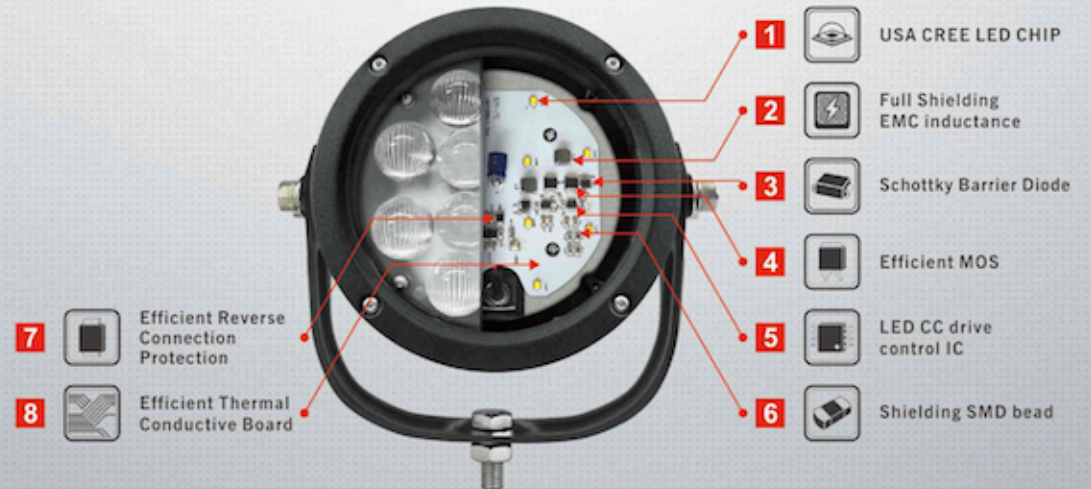
MODEL	WATTS	INPUT VOLT DC	NOMINAL CURRENT	LED CHIP	THEORETICAL LUMENS OUTPUT	OPERATING LUMENS OUTPUT	COLOUR TEMPERATURE	LENS	BODY	IP RATING	WEIGHT	MOUNTING BRACKET	BEAM	PACKAGING
SM-6027-RXA	27W	12-30V	12V 2.25A	CREE XBD	2700LM	1900LM	6500K	PC	Aluminum	Ip67	1.2Kg	Stainless sheet	Flood	12PCS/CTN
SM-7036-RXA	36W		12V 3A		2640LM	2100LM					1.4Kg		Spot	12PCS/CTN
SM-6024-RXA	24W		12V 2A	Epistar	1250LM	2400LM					0.8Kg	Flood	20PCS/CTN	



LED DRIVING LIGHT



The LED circuit diagram
SM-7036-RXA



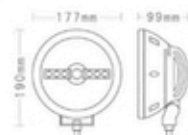


SM-7030-RXA 30W

- SM-7030-RXA1 7"
- Product Name: combination of Led driving light&day light
- Led Power: CREE MK 2pcs*15W/CREE XBD 6pcs
- Operating Volt: 12-48V DC
- Size: 190*177*99 mm
- Long life: 50000h
- Color temperature: 6000-6500K
- Theoretical lumens output: 3538 lm
- Beam: spot beam
- Material: ADC 12 die cast aluminum housing,high-strength PC cover
- PC lens,304 stainless steel bracket
- Waterproof rate: Ip67
- CE & RoHS approved



PRODUCTS **SIZE**



The LED circuit diagram
SM-5040-SXA



- USA CREE LED CHIP
- LED CC drive control IC
- Full EMI Shielding
- Efficient MOS
- Schottky Barrier Diode
- High quality TDK Capacity



PRODUCTS



PRODUCT FEATURES

- Vibration: conform to GB/T 10485-2007 requirements.
- Material: Adopting ADS12 die-casting aluminum, strengthening PC cover, high-strength nylon bracket with adjustable gear.
- The product's structure is unique, the back housing and front cover can dismantle, easy to install and replace.
- Adopting unique high transparent and anti dazzle lens.
- Adopting unique bracket with good quake-proof function, high-strength nylon bracket with adjustable tooth which can adjust angle flexibly, conveniently and reliably.



PROUCTS PARAMETERS

MODEL	WATTS	INPUT VOLT DC	NOMINAL CURRENT	LED CHIP	THEORETICAL LUMENS OUTPUT	OPERATING LUMENS OUTPUT	COLOUR TEMPERATURE	LENS	BODY	IP RATING	WEIGHT	MOUNTING BRACKET	BEAM	PACKAGING
SM-7045-SXA	45W		12V 3.75A	Epistar	3375LM	3200LM	5500K	PC	Aluminum	IP67	1.38kg	Stainless steel	Spot	20PCS/CTN
SM-6036-RXA	36W	12-30V	12V 3A		2700LM	2150LM	5000K/6500K							
SM-6036-RXB														





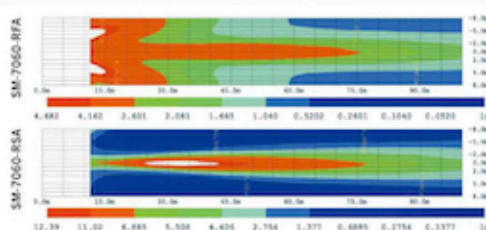
PRODUCTS



PRODUCT FEATURES

1. These LED Driving light back cover and front cover can be apart, easy to install and replace.
2. Housing uses high-purity die-casting aluminum; Housing surface uses the static electricity spurs models processing and isothermal solidifying, which has strong adhesion; Front cover is plated by chrome, which can resist strong corrosion.
3. Unique high transparent anti-glare lens.
4. Using high-strength nylon adjustable bracket with gear, which is easy, convenient to adjust the angle degree.
5. Using USA Cree XTE 5W/PCS LED chip and handle bracket is available.
6. CE & RoHS & E-mark approved.

LIGHT PATTERN MAP



PRODUCTS PARAMETERS

MODEL	WATTS	INPUT VOLT DC	NOMINAL CURRENT	LED CHIP	THEORETICAL LUMENS OUTPUT	OPERATING LUMENS OUTPUT	COLOUR TEMPERATURE	LENS	BODY	IP RATING	WEIGHT	MOUNTING BRACKET	BEAM	PACKAGING
SM-5045-RXA	45W		12V 3.75A		3800LM	2800LM					1.8kg			12PCS/CTN
SM-7060-RXA	60W	12-48V	12V 5A	CREE XTE	5100LM	3500LM	6500K	PC	Aluminum	IP67	2.5kg	Stainless steel	Driving Spot	8PCS/CTN
SM-9120-RSA	120W		12V 10A		10000LM	7500LM					3.5kg			4PCS/CTN



PRODUCTS

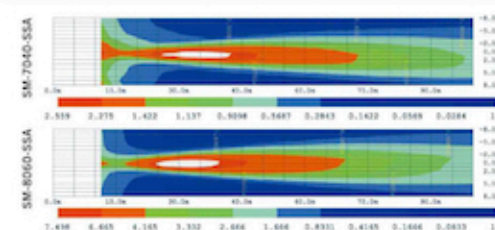
SIZE



PRODUCT FEATURES

1. Vibration: conform to GB/T 10485-2007 requirements.
2. Material: Adopting ADS12 die-casting aluminum, strengthening PC cover, high-strength nylon bracket with adjustable gear.
3. The product's structure is unique, novel, and the back housing and front cover can dismantle, easy to install and change.
4. Adopting unique high transparent and anti-dazzle lens.
5. Adopting unique bracket with good quake-proof, high-strength nylon bracket with adjustable tooth, can install flexibly, conveniently and reliably.
6. CREE LED chips and good waterproof and dust-proof function.

LIGHT PATTERN MAP



PRODUCT PARAMETERS

MODEL	WATTS	INPUT VOLT DC	NOMINAL CURRENT	LED CHIP	THEORETICAL LUMENS OUTPUT	OPERATING LUMENS OUTPUT	COLOUR TEMPERATURE	LENS	BODY	IP RATING	WEIGHT	MOUNTING BRACKET	BEAM	PACKAGING
SM-7040-SXA	40W		12V 3A		3360LM	2688LM					1.1kg			
SM-8060-SXA	60W	12-48V	12V 5A	CREE XML	5040LM	3780LM	6500K	PC	Aluminum	IP67	1.6kg	Stainless steel	Spot	8PCS/CTN

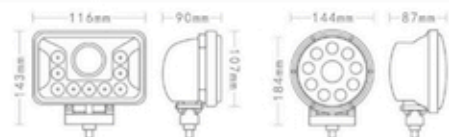


SM-8042-SXA NEW
42W**SM-6042-RXA** NEW
42W

PRODUCTS



SIZE



PRODUCT FEATURES

1. Built-in high efficiency glass reflector lamp, the brightness increases 15% or more.
2. Using high intensity 3W/pcs LED chip, low power consumption, high luminous flux.
3. Using purity aluminum alloy die casting, processed by electrostatic spraying, better constant temperature curing and stronger adhesion.
4. Good waterproof, shockproof and dustproof function.
5. Material: Compact aluminum die cast housing, PC Lens, stainless steel bracket.
6. Application: car, tractors, suv, excavator, Agricultural machinery lamps, Beach lights, Ship indicator, Cruise lamp, large trucks lamps.
7. CE & RoHS approved.



PRODUCT PARAMETERS

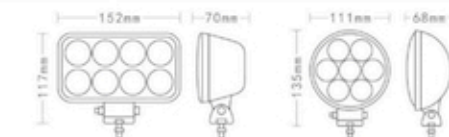
MODEL	WATTS	INPUT VOLT DC	NOMINAL CURRENT	LED CHIP	THEORETICAL LUMENS OUTPUT	OPERATING LUMENS OUTPUT	COLOUR TEMPERATURE	LENS	BODY	IP RATING	WEIGHT	MOUNTING BRACKET	BEAM	PACKAGING
SM-8042-SXA	42W	12-36V	12V 3.5A	CREE	4200LM	3800LM	6500K	PC	Aluminum	IP67	1.0kg	Stainless steel	H/Low	24PCS/CTN
SM-6042-RXA														18PCS/CTN

**SM-6024-SXB** NEW
24W**SM-4021-RXA** NEW
21W

PRODUCTS



SIZE



PRODUCT FEATURES

1. IP67 Waterproof, shockproof, dustproof.
2. High quality aluminum housing for good heat dissipation.
3. Wide range of applications: Off-Road vehicles, Engineering vehicles, Specialized vehicles
4. Adjustable stainless steel mounting bracket.
5. Combo beam: High beam and low beam together, more suitable for driving.



PRODUCTS PARAMETERS

MODEL	WATTS	INPUT VOLT DC	NOMINAL CURRENT	LED CHIP	THEORETICAL LUMENS OUTPUT	OPERATING LUMENS OUTPUT	COLOUR TEMPERATURE	LENS	BODY	IP RATING	WEIGHT	MOUNTING BRACKET	BEAM	PACKAGING
SM-6024-SXB	24W	12-30V	2.0A	Epistar	2400LM	1560LM	6500K	PC	Aluminum	IP67	1.0kg	Stainless steel	Spot	20PCS/CTN
SM-4021-RXA													21W	



SM-7051-RXA **HOT**
51WSM-6070-RXA **NEW**
70W

PRODUCTS



SIZE



PRODUCT FEATURES

1. Adopt high quality LED chip for ultra high brightness and long work life.
2. IP67 Waterproof, shockproof, dustproof.
3. Housing use high-purity die-casting aluminum; housing surface use the static electricity spurs models processing and isothermal solidifying, which has strong adhesion.
4. Anti-collision & anti-friction cover.
5. Wide range of applications: Off-Road vehicles, Engineering vehicles, Specialized vehicles.
6. Adjustable stainless steel mounting bracket.



PRODUCTS PARAMETERS

MODEL	WATTS	INPUT VOLT DC	NOMINAL CURRENT	LED CHIP	THEORETICAL LUMENS OUTPUT	OPERATING LUMENS OUTPUT	COLOUR TEMPERATURE	LENS	BODY	IP RATING	WEIGHT	MOUNTING BRACKET	BEAM	PACKAGING
SM-7051-RXA	51W	12-30V	12V 4.25A	Epistar	5000LM	3000LM	6500K	PC	Aluminum	IP67	2.0kg	Stainless steel	Flood	4PCS/CTN
SM-6070-RXA	70W		12V 5.8A	CREE	7000LM	5000LM							Spot	8PCS/CTN



HID WORK LIGHT



The LED circuit diagram

SM-2010

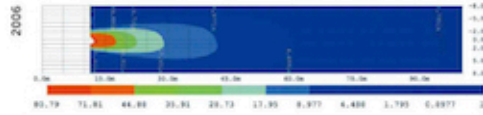
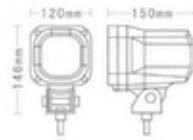


SM-2006



HOT 35W/55W

- Operating voltage: 12V, 9-32V DC
- Luminous flux: 35W 3200±50lm/ 55W 4300±400lm
- Color temperature: 4300K, 6000K
- Working life: 3000-5000 hours
- Operating temperature: -45~85°C
- HID xenon bulb: H3
- Material: PC lens, plastic housing, stainless steel bracket
- Size: 120*120*150mm
- Waterproof rate: IP65

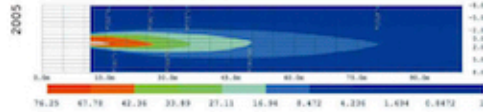
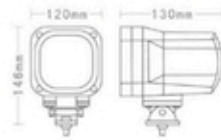


SM-2005



HOT 35W

- Power: 35W
- Operating voltage: 9-32V DC
- Luminous flux: 3200±50lm
- Color temperature: 4300K, 6000K
- Working life: 3000-5000 hours
- Operating temperature: -45~85°C
- HID xenon bulb: H3
- Optional beam: Flood beam
- Size: 120*120*130mm
- Waterproof rate: IP65
- RoHs approved

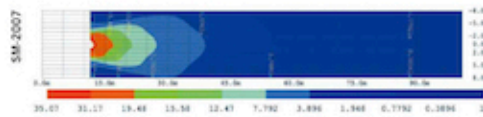
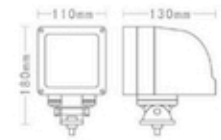


SM-2007



HOT 35W

- Power: 35W
- Operating voltage: 9-32V DC
- Luminous flux: 3200±50lm
- Color temperature: 4300K, 6000K
- Working life: 3000-5000 hours
- Operating temperature: -45~85°C
- HID xenon bulb: D2Y
- Size: 110*110*130mm
- Waterproof rate: IP65
- CE & RoHs approved

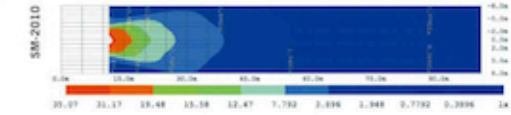
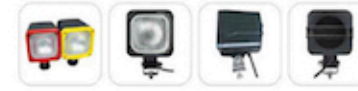
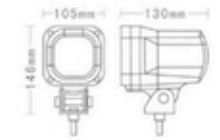


SM-2010



HOT 35W/55W

- Power: 35W/55W
- Operating voltage: 9-32V DC
- Luminous flux: 35W 3200±50lm/ 55W 4300±400lm
- Color temperature: 4300K, 6000K
- Working life: 3000-5000 hours
- Operating temperature: -45~85°C
- HID xenon bulb: D2Y
- Optional beam: Spot beam, flood beam
- Size: 105*105*130mm
- Waterproof rate: IP65
- CE & RoHs approved

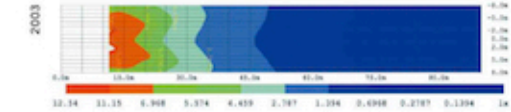
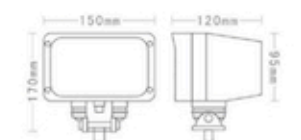


SM-2003



HOT 35W/55W

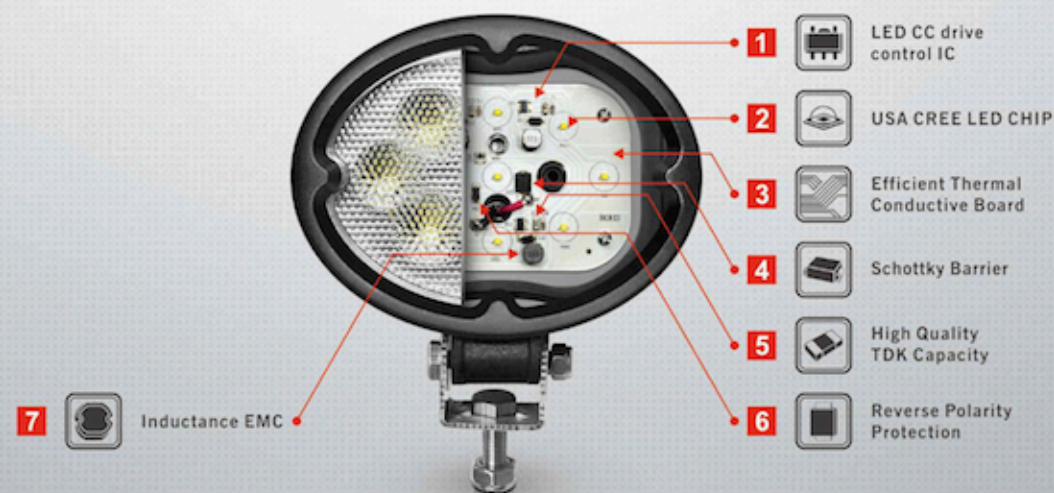
- Operating voltage: 9-32V DC
- Luminous flux: 35W 3200±50lm/ 55W 4300±400lm
- Color temperature: 4300K, 6000K
- Working life: 3000-5000 hours
- Operating temperature: -45~85°C
- HID xenon bulb: H11
- Optional beam: Flood beam
- Size: 105*105*130mm
- Waterproof rate: IP65



HID DRIVING LIGHT



The LED circuit diagram SM-6027-RXA



HID DRIVING LIGHT

EXPERT OF LED AUTO LIGHTING MANUFACTURE

HOT



SM-914
SM-915

- Operating voltage: 12V; 12-30V DC
- Luminous flux: 35W 3200±50 lm/ 4300±400 lm
- Optional beam: Flood beam, spot beam
- Optional size: 4"/7"/9"
- Working life: 3000-5000 hours
- Working temperature: -40℃ ~ 105℃
- Color temperature: 4300K, 6000K
- Material: H3 bulb, internal ballast, toughened glass lens, ABS plastic housing, stainless steel bracket
- CE approved

MODEL	LENGTH	WATTS	BALLST	PACKING
SM-914	140x120x150MM 4"	35W	INTERNAL	8PCS
SM-915	205x150x220MM 7"	55W	INTERNAL	4PCS
	250x180x270MM 9"			4PCS



PRODUCTS

SIZE



HOT



SM-916
SM-917

- Operating voltage: 12V; 12-30V DC
- Luminous flux: 35W 3200±50 lm/ 4300±400 lm
- Optional beam: Flood beam, spot beam
- Optional size: 4"/7"/9"
- Working life: 3000-5000 hours
- Working temperature: -40℃ ~ 105℃
- Color temperature: 4300K, 6000K
- Material: H3 bulb, internal ballast, toughened glass lens, ABS plastic housing, stainless steel bracket
- RoHS approved

MODEL	LENGTH	WATTS	BALLST	PACKING
SM-916	140x120x150MM 4"	35W	INTERNAL	8PCS
SM-917	205x150x220MM 7"	55W	INTERNAL	4PCS
	250x180x270MM 9"			4PCS



PRODUCTS

SIZE



HOT



**SM-918
SM-919**

- Operating voltage: 12V; 12-30V DC
- Luminous flux: 35W 3200±50 lm/ 4300±400 lm
- Optional beam: Flood beam, spot beam
- Optional size: 4"/7"/9"
- Working life: 3000-5000 hours
- Working temperature: -40℃~ 105℃
- Color temperature: 4300K, 6000K
- Material: H3 bulb, internal ballast, toughened glass lens, ABS plastic housing, stainless steel bracket
- RoHs approved

MODEL	LENGTH	WATTS	BALLST	PACKING
SM-918	140x120x150MM 4"	35W	INTERNAL	8PCS
SM-919	205x150x220MM 7"	55W	INTERNAL	4PCS
	250x180x270MM 9"			4PCS



PRODUCTS

SIZE

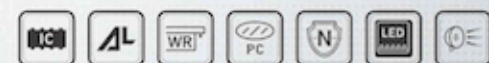


LED/HID SEARCHLIGHT



The LED circuit diagram

SM-7035-RXA



- 1 USA CREE LED CHIP
- 2 Full Shielding EMC inductance
- 3 LED CC drive control IC
- 4 Schottky Barrier Diode
- 5 Shielding SMD bead
- 6 TDK Capacity
- 7 Efficient Reverse Connection Protection



HOT



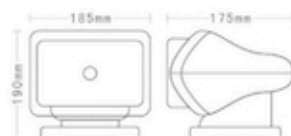
SM-2019 35W/55W

- Power: 35W/55W
- Input voltage: 12V/24V
- HID xenon bulb: 9005
- Color temperature: 4300K, 6000K
- Beam: Spot beam
- Hi-impact nylon plastic housing with magnetic base
- Toughened glass lens
- Internal slim ballast
- Remote controller working distance: 30±10m
- 120° vertical rotation
- Optional color: Black/white
- Working life: Up to 3,000 hours
- CE approved
- Packaging: 4pcs/ctn



PRODUCTS

SIZE

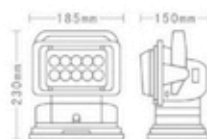


NEW



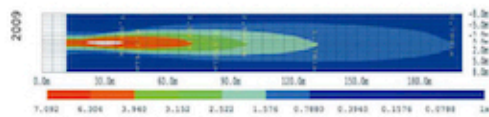
SM-8050-SXA 50W

- LED Power: 50W, 3200 lumens
- Operating Voltage: 12V
- 10pcs*5w high intensity USA CREE XTE LEDs
- Color Temperature: 6500K
- Material: Diecast ABS plastic housing
- Lens material: Anti-dazzling lens
- Waterproof cover
- Optional Beam: Spot
- 50000 hours above life time
- Housing color: White/black
- Packaging: 4pcs/ctn



PRODUCTS

LIGHT PATTERN MAP



PRODUCTS ACCESSORIES

WIRING KITS FOR LED LIGHT BARS

WIRING KITS FOR LED LIGHT BARS
Wireharness with switch and relay
How to connect lamps to your car?
Yes, That's it!



MAGNET HOLDER

Strong magnet base:
Usage: accessories for LED work lights, LED light bars as additional mounting method.
Function:
Strong ability: powerfully attach to metal surface without dropping, each magnet can reach 20kg, demanded quantity according to mounting lamp brackets.
Safety: It is safe to attach on the car even when driving speed reaches to 120km/h.
Rubber pad: Separate strong magnets with car surface painting for protection, using freely.



CIGAR LIGHTER

The cigarette lighter receptacle in an automobile, initially designed to power an electrically heated cigarette lighter, became a de facto standard DC connector to supply electrical power for portable accessories used in or near an automobile. While the cigarette lighter receptacle is a common feature of automobiles, as a DC power connector it has the disadvantage of relatively low current rating and poor contact stability.



ALUMINUM HANDLE



STAINLESS STEEL BRACKET

